

▼ LB-28

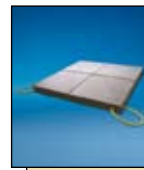


- Nine sizes with lifting capacities from 3,1 to 67,2 ton Kevlar® reinforced and “center target” marked to assure safety in use
- Aggressive high-friction surface to prevent bags from slipping
- Non-conducting rubber, resists oil and most chemicals; operating temperature range is 0 °C to 90 °C
- 25 ton and larger sizes provided with Nylon® straps and heavy-duty reinforced lugs
- Industrial interchange air supply to deadman controller; safety coupler inflation hoses protect against accidental disconnections
- Inflatable using shop air or water.



◀ Handle close clearance loads with the thinnest profile possible.

Low clearance lifting using compressed air or water



Lifting Bag Base

Use a 610 x 610 mm lifting bag base under lifting bag to provide a flat surface and protect the lifting bag from debris damage. Order model number **LPC2421**.



Cribbing Blocks

Safely support lifted loads using Enerpac Resin Cribbing. Available in three sizes and as wedges to help stabilize stacks.

Page: 54



Low Clearance Loads

Lift up to 16 tons with minimal clearance gap of only 10 mm with **LW-16** Lifting Wedge.

Page: 172

Lifting Bags

LB Series

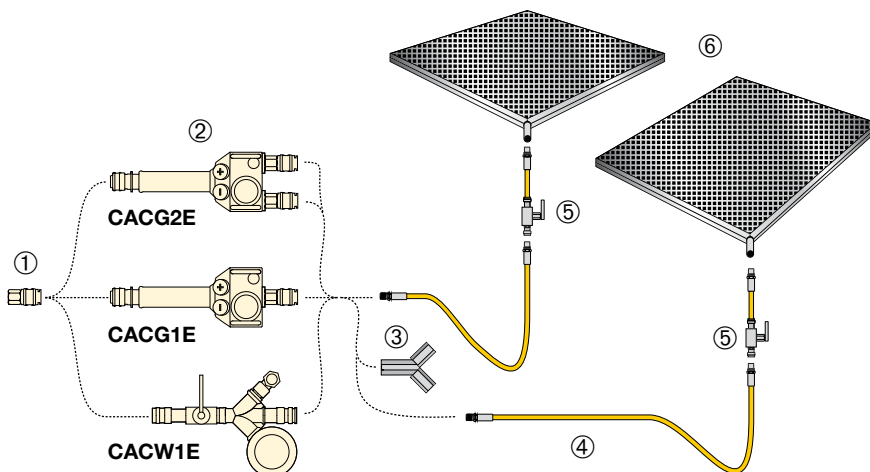


Lifting Bag Capacity:
3,1 - 67,2 ton

Collapsed Height:
28-31 mm

Maximum Extended Height:
157-541 mm

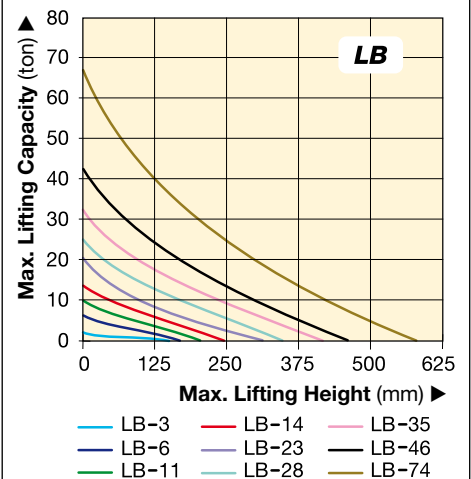
Maximum Operating Air Pressure:
8 bar




▼ SELECTION CHART

Item Nr.	Model Number usage with air	Model Number usage with water	Description
①	CACA1	-	Construction Compressor Adaptor
②	CACG1E	-	Single Deadman Controller
	CACG2E	-	Double Deadman Controller
	-	CACW1E	Single Ball Valve Controller
③	CAYC	CAYC	"Y" Connector for Twin application
④	AY0805	-	Yellow inflation Hose 5 meters
	AY0810	-	Yellow inflation Hose 10 meters
	-	AB0805	Blue inflation Hose 5 meters
	-	AB0810	Blue inflation Hose 10 meters
⑤	A0801	-	Yellow hose 0,5 meter with Pressure Relief Valve and Ball Valve
⑥	LB-3.....LB-74	LB-3.....LB-74	Lifting Bags (see below)

LIFTING HEIGHT vs. LOAD CHART



▼ SELECTION CHART

*Lifting Bag Capacity	Collapsed Height	Maximum Lifting Height	Maximum Extended Height	Model Number	*Capacity @ 50% Extended Height	Length x Width	Nylon Straps & Lugs Included	
ton (kN)	(mm)	(mm)	(mm)		ton (kN)	(mm)		(kg)
3,1 (27)	28	130	157	LB-3	0,7 (6,8)	229 x 229	-	1,3
5,8 (57)	28	150	178	LB-6	1,7 (16,6)	305 x 305	-	2,4
9,8 (96)	28	180	208	LB-11	3,6 (35,3)	381 x 381	-	4,0
12,9 (126)	28	220	249	LB-14	4,0 (39,2)	457 x 457	-	5,3
20,6 (202)	28	270	297	LB-23	6,4 (62,7)	559 x 559	-	8,1
25,1 (246)	31	300	330	LB-28	7,7 (75,5)	610 x 610	•	11,2
32,0 (314)	31	360	391	LB-35	9,0 (88,2)	686 x 686	•	13,3
42,1 (413)	31	420	449	LB-46	11,7 (114,7)	762 x 762	•	18,4
67,2 (656)	31	510	541	LB-74	19,1 (187,2)	914 x 914	•	25,3

* Lifting capacity reduces as lifting bag height increases: see diagram.